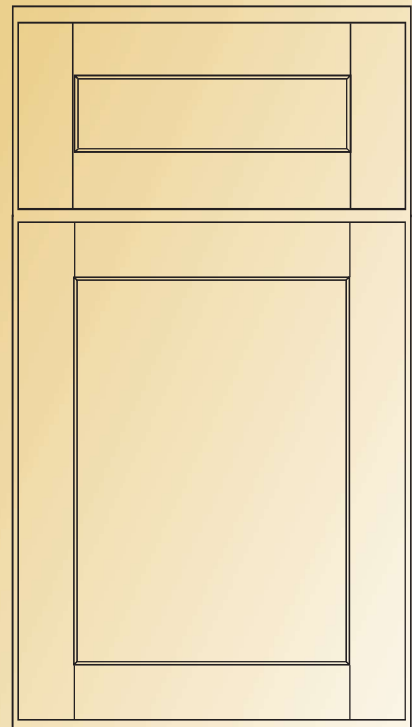




HomeMark Limited Specifications & Pricing

December 2023





Welcome

This Product Specification Guide has been formatted for designing with HomeMark Cabinets. It contains information for our products in an easy-to-read format. In keeping with our policy of continuous product refinement, HomeMark Cabinets reserves the right to change specifications in design and materials as conditions require. If you would like further clarification about any of our products, processes, or have suggestions, please contact Customer Service.

Table of Contents

- 1 Welcome
- 2 Warranty & Maintenance Care
- 3 Door Styles
- 4 Standard Cabinet Construction
- 5 Modifications
- 7 Wall Cabinets
- 10 Wood Range Hoods
- 12 Base Cabinets
- 18 Tall Cabinets
- 19 Vanity Cabinets
- 21 Panels & Skins
- 24 Accessories
- 27 Mouldings
- 30 Touch-Up & Sample Doors
- 31 List Pricing

Limited warranty

- This warranty applies to HomeMark Cabinets cabinets installed for residential use. HomeMark Cabinets warrants kitchen cabinets free of manufacturing defects for a period of (5) five years from the date of purchase.
- This warranty applies only to the original purchaser and installation site and is not transferable.

Your warranty coverage

Materials used in the manufacturing of the cabinets are sensitive to temperature and humidity variations. When humidity is low, with any wood product, cracking and center panel shrinkage may occur. This warranty does not cover damages or failure attributable to:

- Issues related to the natural characteristics of wood products or the normal effects of aging.
- Defects caused by product modifications completed by the owner/installer.
- Color variations in cabinets are a natural occurrence due to wood species, age and exposure to UV light and sunlight and therefore such variations and changes are not considered defects.
- Micro cracks due to the humidity and temperature variations.
- Damage caused by flooding or standing water from leaking pipes, faucets, household appliances, etc: up to and including flooding and any damages caused by natural catastrophes.
- Wood characteristics naturally occurring such as variations in color, grain and knots are not considered defects.

Maintenance care

- For daily cleaning, use a dry cloth and a soft liquid cleaner.
- Never use abrasive cleaners containing chrome, acetone, chlorine or strong bleach. Do not use scrapers, metallic brushes, and other products which can scratch or tarnish surfaces.
- Good ventilation is essential for maintaining the quality and look of this furniture.

Warranty Service

- To make a claim, contact HomeMark Cabinets no later than 30 days following the date of receipt of product, at customerservice@homemarkcabinets.com. Our customer care team will ask you to submit the details of your claim and pictures (if applicable).
- Proof of purchase, such as the bill of sale is mandatory when requesting warranty service.
- No unauthorized person, installer, dealer, or agent is entitled to assume any liability on behalf of HomeMark Cabinets relating to the sale of this product or has the authority to increase or alter the obligations or limitations of this warranty.
- HomeMark Cabinets reserves the right to designate a representative to inspect the kitchen cabinet for analysis.
- The sole remedy provided by this warranty is the repair or replacement of any part or parts that may prove defective under normal residential usage.

Claims

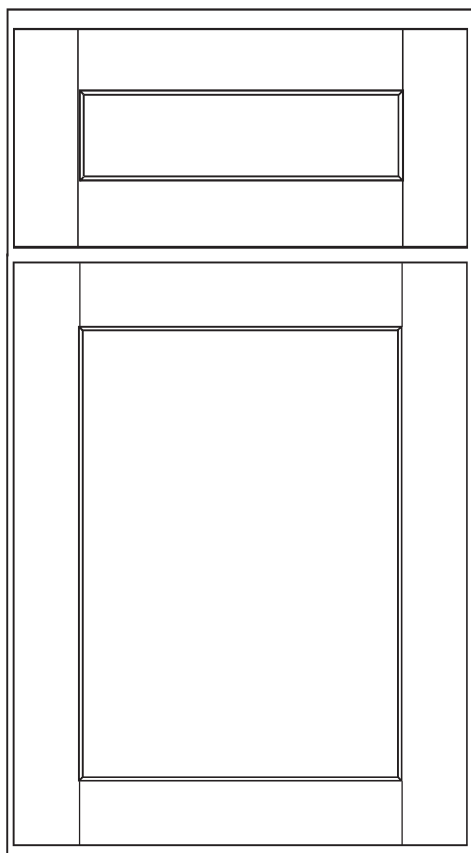
Submit claims to:

HomeMark Cabinets
Customer Service
4747 Western Avenue
Connersville, Indiana 47331

customerservice@homemarkcabinets.com
888-350-9165

Door Style & Finishes

Highland - Shaker Recessed Panel



- Full overlay door
- 3/4" solid wood, 2 3/8" wide mortise & tenon door frame
- 1/4" veneered, engineered MDF core center panel
- Decorative hardware required

Overlay/Reveal:

- Side 1 1/4" overlay with 1/4" frame reveal
- Top 3/4" overlay with 3/4" frame reveal
- Bottom 1 1/4" overlay with 1/4" frame reveal

Finishes:

Paint:

- Snow
- Pebble
- Cobalt

Stain:

- Birch Graystone
- Rustic Hickory Mountain

Discrepancies, errors, and omissions may occur between this Specification Guide, design software, and the web based Quoting Tool. Please consult with Customer Service for final determination of product. HomeMark Cabinets reserves the right to change and alter its product and/or specifications without notification as market conditions require. It is the responsibility of the individual user to update their own Specification Guide and design software. Material dimensions may be nominal based on lumber industry standards.

Standard Cabinet Construction

Wall, Base, and Utility cabinets are constructed using high quality materials and hardware. The illustration below identifies the components of a standard Base cabinet. Wall and Utility cabinets have similar construction. Please refer to Construction Notes below outlining differences.



1. 3/4" thick solid hardwood doors and drawer fronts, with engineered center panel for a quality look and feel.
2. 3/4" solid hardwood frame for strength and rigidity.
3. 1/2" Unfinished plywood side panels:
* **No-charge factory applied matching wood veneer end panel - call out left, right or both.**
4. 5/8" solid hardwood dovetail drawer with 3/8" plywood drawer bottom, can support up to 75lbs.
5. 1/2" & 1/4" reinforcing back panel.
6. Concealed under-drawer glide mechanism is soft-close and gives full extension.
7. Soft-close, 6-way adjustable, concealed hinges open to 105 degrees for easy access.
8. Sturdy 3/4" plywood shelves wrapped in stain and moisture-resistant wood veneer.
9. Adjustable locking shelf clips for internal storage flexibility.
10. Natural birch veneered interior with UV clear coating for stain and scratch resistance.
11. 3/8" plywood base for extra strength.
12. Color-matched, veneered plywood toe kick for a neat finish.
13. Corner block stabilizers and I-Beam add strength and rigidity.

Modifications

Finished End - FE

Factory Installed End Panels

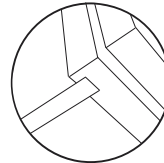
No price up-charge modification

- Available for all cabinets.
- 3/16" veneered engineered core panel.
- Specify Left/Right/Both to identify Finished End.

Finished End & Construction Notes

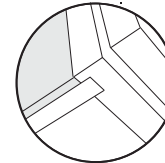
- All standard cabinets have 1/2" unf nished, plywood ends
- Seam between applied panel and face frame will visible
- Finished panels available to ship loose for f eld installation.

Standard Construction

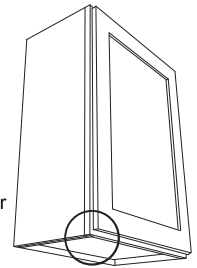


Unf nished, 1/2" plywood panel with 1/4" reveal

Finished End



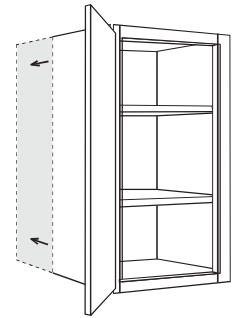
Applied, f nished, veneer panel furniture end with 1/16" reveal



Increased Depth - ID

- Increased Depth option is available in 1" increments

<u>Cabinet Type</u>	<u>Availability</u>	<u>Increment</u>	<u>List Price</u>
Wall - Wall Cabinets 12" Deep	13" - 30"	1"	\$ 700
Base	NA	NA	NA
Tall - Pantry	25" to 30"	1"	\$1,100
Tall - Appliance	NA	NA	NA
Vanity	NA	NA	NA



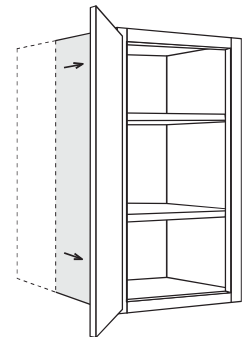
WARNING: Failure to properly install and provide additional support for increased depth cabinets can result in collapse of the cabinet, personal injury and/or property damage which is not covered by warranty.

Wall cabinets 15" in depth or more (when installed as a traditional wall cabinet) must be installed using 3 points of contact. Points of contact for installed wall cabinets include: adjacent cabinet, wall, refrigerator return panel and ceiling. Cabinet sides must be attached to adjacent cabinet frame and/ or wall stud within 6" of cabinet face frame. If 3 points of contact cannot be achieved under cabinet support will be required.

Reduced Depth - RD

- Cabinet Reduced Depth option available in 1" or 3" increment based on cabinet type

<u>Cabinet Type</u>	<u>Availability</u>	<u>Increment</u>	<u>List Price</u>
Wall - 12" Deep	4" - 11"	1"	\$ 325
Wall - 24" Deep	13" - 23"	1"	\$ 325
Base - Door & Drawer	12" - 21"	3"	\$ 375
Base - Full Height & Sink Base	4" - 23"	1"	\$ 325
Base - Drawer Base	12" - 21"	3"	\$ 550
Tall - Pantry	4" - 23"	3"	\$ 550
Tall - Appliance	12" - 21"	3"	\$ 550
Vanity Base - Door & Drawers	12" - 18"	3"	\$ 400
Vanity - Drawer Base	12" - 18"	3"	\$ 550



Prepped for Insert - PFI

- Door will **not** contain mullions.
- Standard shelves included. Insert panels and/or glass **not** included
- Matching Interior (MI) is **not** available
- Door back routed to receive 3/8" thick insert.
- Insert/Glass fastener clips are **not** included.

List Price

\$180 per door

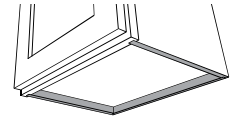


No Toekick - NTK

- Cabinet will not have a toekick
- Does not impact cabinet floor

List Price

\$310

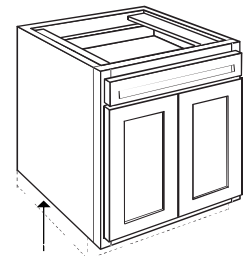


Reduce Toekick - RDTK

- Reduce Toekick height in 1/2" increments from 1/2" to 4" high.
- Modification does **not** impact face frame dimension.

List Price

\$310



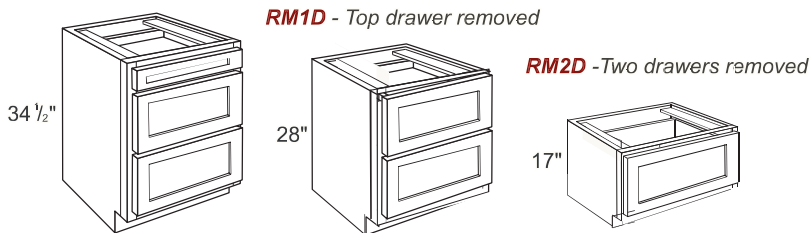
Remove Top Drawer or Drawers - RMD

- Available on 2 and 3 drawer base cabinets
- Modification does **not** alter face frame rail or opening dimensions
- Removed drawers will not be shipped with cabinet

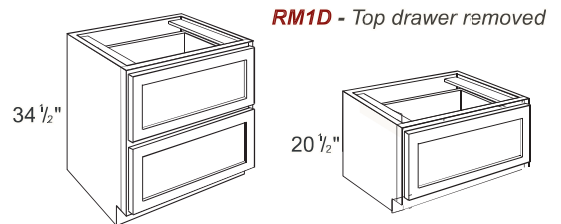
List Price

\$375

3 Drawer Base



2 Drawer Base



False Top Drawer - FTD

- Cabinet will not have a drawer
- Top drawer front attached to face frame

List Price

\$100

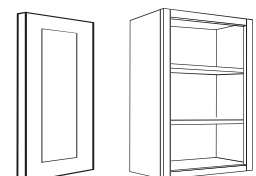


Ship Doors and Drawer Fronts Loose - SDL

- Cabinet will not have doors or drawer fronts installed
- Drawer glides and drawer boxes will be installed
- Hinges are included with cabinet

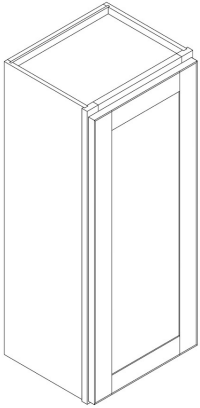
List Price

\$50



Wall Cabinets

Wall Cabinet, 1 Door



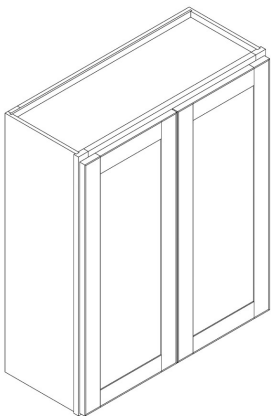
Modifications:

- FE
- ID
- RD
- PFI
- SDL

SKU	W (in)	H (in)	D (in)
WC0930	9	30	12
WC1230	12	30	12
WC1530	15	30	12
WC1830	18	30	12
WC2130	21	30	12
WC0936	9	36	12
WC1236	12	36	12
WC1536	15	36	12
WC1836	18	36	12
WC2136	21	36	12
WC0942	9	42	12
WC1242	12	42	12
WC1542	15	42	12
WC1842	18	42	12
WC2142	21	42	12

- 30" and 36" high cabinets have 2 shelves
- 42" high cabinets have 3 shelves

Wall Cabinet, 2 Door



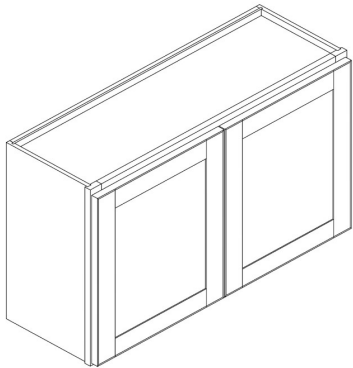
Modifications:

- FE
- ID
- RD
- PFI
- SDL

SKU	W (in)	H (in)	D (in)
WC2430	24	30	12
WC2730	27	30	12
WC3030	30	30	12
WC3330	33	30	12
WC3630	36	30	12
WC2436	24	36	12
WC2736	27	36	12
WC3036	30	36	12
WC3336	33	36	12
WC3636	36	36	12
WC2442	24	42	12
WC2742	27	42	12
WC3042	30	42	12
WC3342	33	42	12
WC3642	36	42	12

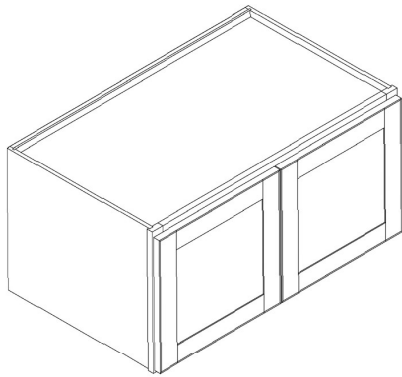
- 30" and 36" high cabinets have 2 shelves
- 42" high cabinets have 3 shelves

Bridge Wall Cabinet, 2 Doors



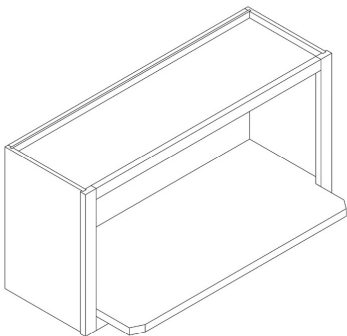
Modifications:

- FE
- ID
- RD
- PFI
- SDL



SKU	W (in)	H (in)	D (in)
WC3012	30	12	12
WC3015	30	15	12
WC3018	30	18	12
WC3021	30	21	12
WC3024	30	24	12
WC3312	33	12	12
WC331224	33	12	24
WC3318	33	18	12
WC331824	33	18	24
WC3324	33	24	12
WC332424	33	24	24
WC3612	36	12	12
WC3615	36	15	12
WC361824	36	18	24
WC3618	36	18	12
WC362424	36	24	24
WC3624	36	24	12
WC361224	36	12	24

Wall Microwave Cabinet



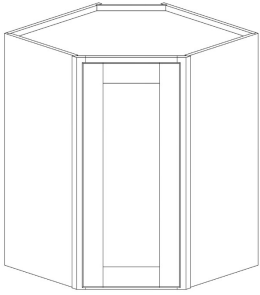
Modifications:

- FE
- RD

SKU	W (in)	H (in)	D (in)
WM3018	30	18	12

- Microwave opening is 14 1/3 high by 26 7/8 wide
- Natural Birch interior and shelf
- Shelf protrudes 6 1/4" from the front of the face frame

Wall Diagonal Corner Cabinet

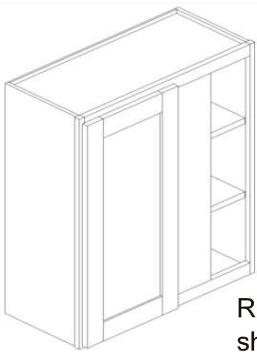


Modifications:

- FE
- PFI
- SDL

SKU	W (in)	H (in)	D (in)
WD2430	24	30	12
WD2436	24	36	12
WD2442	24	42	12
WD274215	27	42	15

Wall Blind Corner Cabinet



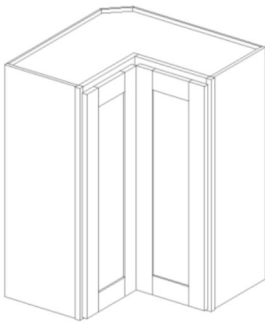
Right shown

Modifications:

- FE
- ID
- RD
- PFI
- SDL

SKU	W (in)	H (in)	D (in)
WBC2730L, WBC2730R	27	30	12
WBC2736L, WBC2736R	27	36	12
WBC2742L, WBC2742R	27	42	12

Wall Easy Reach Cabinet

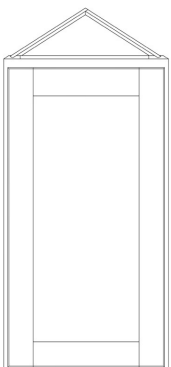


Modifications:

- FE
- PFI
- SDL

SKU	W (in)	H (in)	D (in)
WER2430	24	30	24
WER2436	24	36	24
WER2442	24	42	24

Angle Wall Cabinet



Modifications:

- FE
- PFI
- SDL

SKU	W (in)	H (in)	D (in)
AW1230	12	30	12
AW1236	12	36	12
AW1242	12	42	12

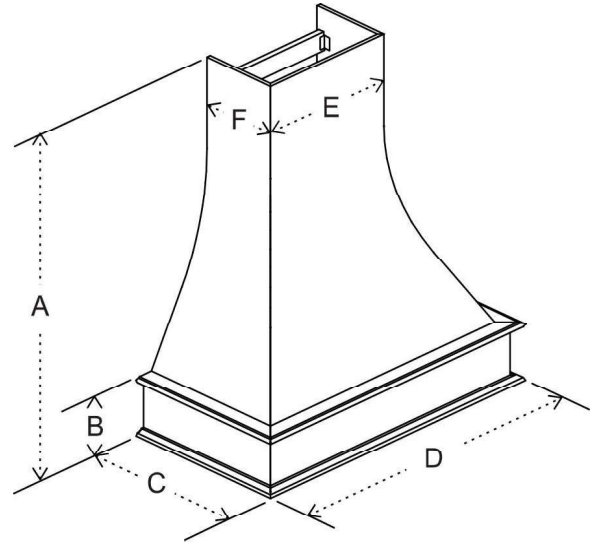
Wood Range Hoods

Wood Range Hoods available in Painted Finishes Only

Artisan

	30 inch	36 inch	42 inch
A= Max. Height	47.48"	47.48"	47.48"
A= Min. Height	40.63"	40.63"	40.63"
B= Hood Height	8.268"	8.268"	8.268"
C = Depth	19.76"	19.76"	19.76"
D= Width	32.05"	38.03"	44.06"
E = Chimney Width	11.38"	17.36"	23.39"
F = Chimney Depth	9.449"	9.449"	9.449"

- Two piece, stand alone, unit
- Trimmable in field to 40.63" minimum height
- Hood must be mounted to wall
- 3/4" plywood veneer casing
- Solid 3/4" hardwood trim molding
- Modifications are not available

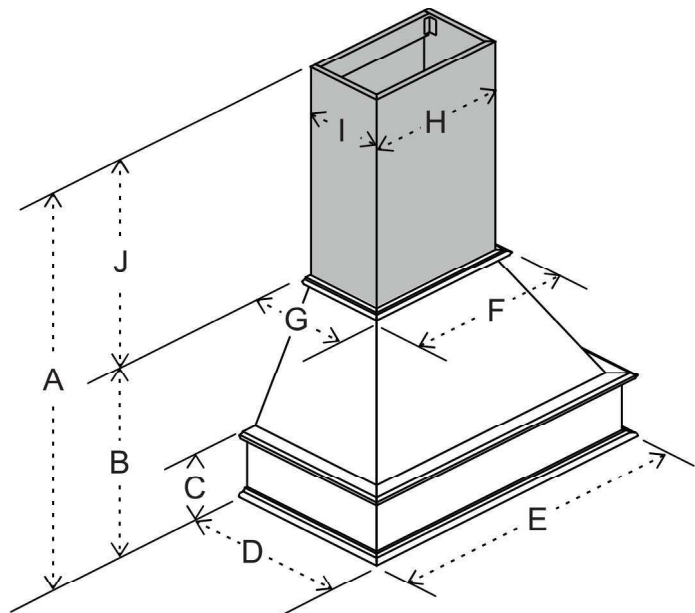


WRH3048-ART
WRH3648-ART
WRH4248-ART

Signature

	36 inch	42 inch
A= Max. Height	46.89"	46.89"
A= Min. Height	23.62"	23.62"
B= Hood Height	22.87"	22.87"
C = Hood Base Height	8.11"	8.11"
D= Hood Depth	22.56"	22.56"
E = Hood Width	38.35"	44.37"
F = Hood Width at Top	20.67"	26.69"
G = Hood Depth at Top	13.58"	13.58"
H = Chimney Width	17.36"	23.39"
I = Chimney Depth	11.93"	11.93"
J = Chimney Height	24.02"	24.02"

- Chimney trimmable in field to 15-1/2" minimum height
- Chimney includes 2 plywood mounting boards & fasteners
- Hood and Chimney must be mounted to wall
- Solid 3/4" hardwood trim molding
- 3/4" plywood veneer casing
- Modifications are not available



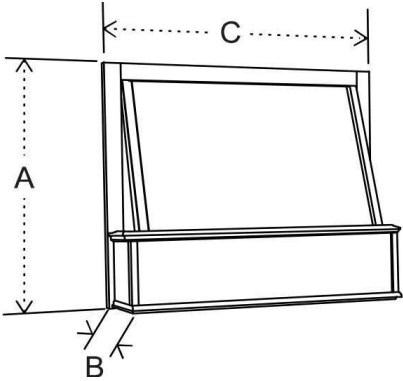
WRH3647-SIG
WRH4247-SIG

Front

	30 inch	36 inch
A= Height	24"	24"
B= Depth	8.75"	8.75"
C= Width	30"	36"

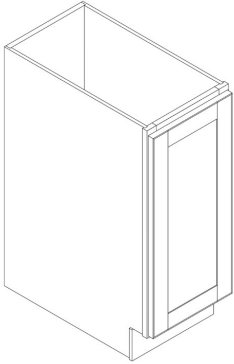
- Not trimmable
- Must be installed between 2 wall cabinets
- Solid hardwood trim molding
- 3/4" plywood veneer casing
- Modifications are not available

WRH3024-FNT
WRH3624-FNT



Base Cabinets

Base Cabinet, 1 Full Height Door



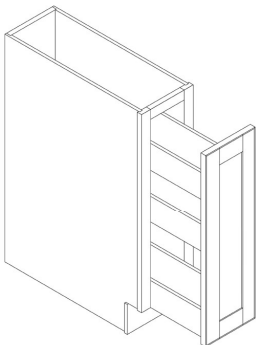
Modifications:

- FE
- RD
- PFI
- NTK
- RDTK
- SDL

SKU	W (in)	H (in)	D (in)
BC09FH	9	34 1/2	24
BC12FH	12	34 1/2	24
BC18FH	18	34 1/2	24

- 1 shelf included

Full Height Base Cabinet with Spice Rack



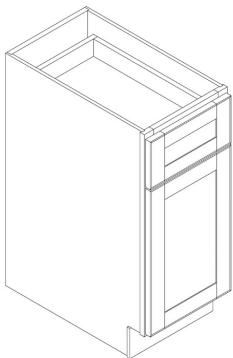
Modifications:

- FE
- NTK
- RDTK
- SDL

SKU	W (in)	H (in)	D (in)
SR09	9	34 1/2	24
SR12	12	34 1/2	24

- Standard, non-soft close glide

Base Cabinet, 1 Door, 1 Drawer



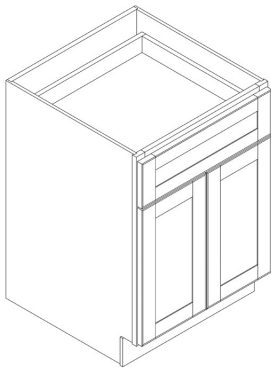
Modifications:

- FE
- RD
- PFI
- NTK
- RDTK
- FTD
- SDL

SKU	W (in)	H (in)	D (in)
BC12	9	34 1/2	24
BC15	12	34 1/2	24
BC18	18	34 1/2	24
BC21	21	34 1/2	24

- 1 shelf included

Base Cabinet, 2 Doors, 1 Drawer



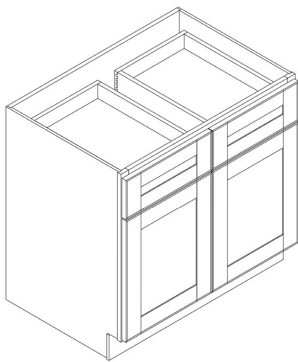
Modifications:

- FE
- RD
- PFI
- NTK
- RDTK
- FTD
- SDL

SKU	W (in)	H (in)	D (in)
BC24	24	34 1/2	24
BC27	27	34 1/2	24
BC30	30	34 1/2	24
BC33	33	34 1/2	24

- 1 shelf included
- All 2 door base cabinets are BUTT Cabinets

Base Cabinet, 2 Doors, 2 Drawers



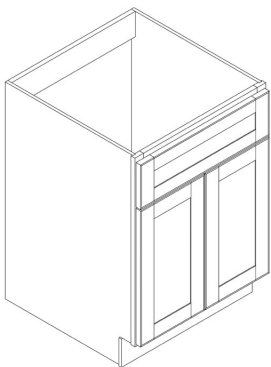
Modifications:

- FE
- RD
- PFI
- NTK
- RDTK
- FTD
- SDL

SKU	W (in)	H (in)	D (in)
BC36	36	34 1/2	24

- 1 shelf included
- All 2 door base cabinets are BUTT Cabinets

Sink Base Cabinet



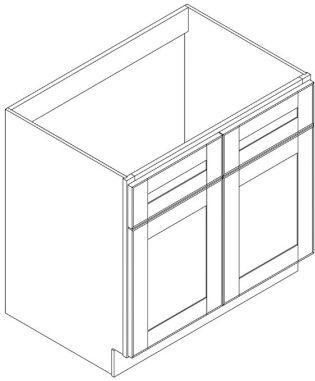
Modifications:

- FE
- RD
- PFI
- NTK
- RDTK
- SDL

SKU	W (in)	H (in)	D (in)
SB30	30	34 1/2	24
SB33	33	34 1/2	24

- Does not have a full back

Sink Base Cabinet



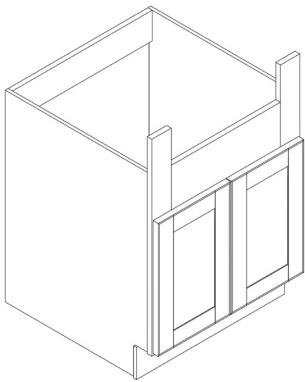
Modifications:

- FE
- RD
- PFI
- NTK
- RDTK
- SDL

SKU	W (in)	H (in)	D (in)
SB36	36	34 1/2	24

- All two door base cabinets are BUTT cabinets, (no center stile).
- Does not have a full back

Farmhouse Sink Base Apron Cabinet



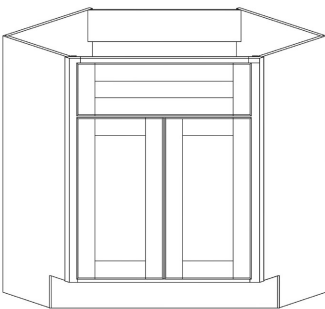
Modifications:

- FE
- RD
- PFI
- NTK
- RDTK
- SDL

SKU	W (in)	H (in)	D (in)
SBA36	36	34 1/2	24

- 13 1/4 can be trimmed to 11 1/2.
- Refer to sink manufacturer's recommendations for additional support required for apron and farmhouse front sinks.
- All two door base cabinets are BUTT cabinets, (no center stile).
- Height to the top of the box is 29", height to the top of the frame is 34.5"
- Does not have a full back.

Corner Sink Base Diagonal Cabinet



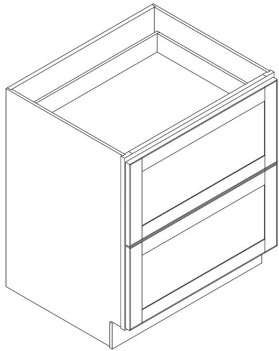
Modifications:

- FE
- PFI
- NTK
- RDTK
- SDL

SKU	W (in)	H (in)	D (in)
SBCD42	42	34 1/2	24

- For adequate dishwasher door clearance and load-ing/ unloading space, a 15" or larger base cabinet is recommended for use between a corner sink base and dishwasher.

Drawer Base Cabinet, 2 Drawers

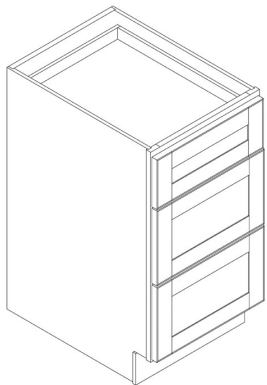


Modifications:

- FE
- RD
- RMD
- NTK
- RDTK
- FTD
- SDL

SKU	W (in)	H (in)	D (in)
DC224	24	34 1/2	24
DC230	30	34 1/2	24
DC236	36	34 1/2	24

Drawer Base Cabinet, 3 Drawers

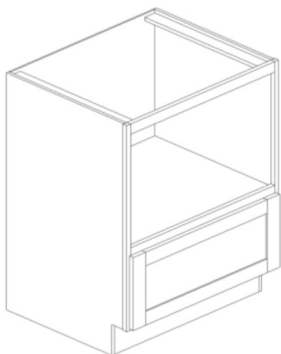


Modifications:

- FE
- RD
- RMD
- NTK
- RDTK
- FTD
- SDL

SKU	W (in)	H (in)	D (in)
DC312	12	34 1/2	24
DC315	15	34 1/2	24
DC318	18	34 1/2	24
DC321	21	34 1/2	24
DC324	24	34 1/2	24
DC327	27	34 1/2	24
DC330	30	34 1/2	24
DC336	36	34 1/2	24

Microwave Base Cabinet



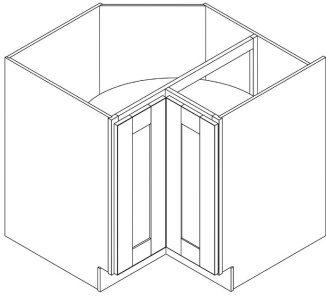
Modifications:

- FE
- RD
- NTK
- RDTK
- SDL

SKU	W (in)	H (in)	D (in)
MBC30	30	34 1/2	24

- Natural Birch interior

Corner Base Cabinet with Lazy Susan



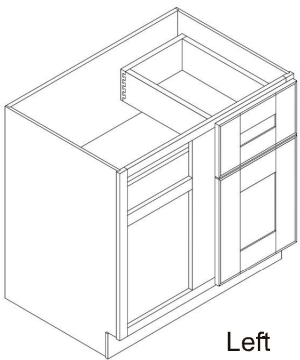
Modifications:

- FE
- PFI
- NTK
- RDTK
- SDL

SKU	W (in)	H (in)	D (in)
CB33	33	34 1/2	24
CB36	36	34 1/2	24

- All wood Lazy Susan
- Upper platter is mounted on a half-shelf
- Two lazy susan trays. One tray per shelf, no center pole.
CB33 and CB36 use 27 11/16" diameter wood trays

Blind Base Corner Cabinet



Left
Shown

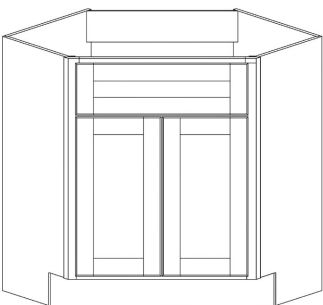
Modifications:

- FE
- RD
- PFI
- NTK
- RDTK
- FTD
- SDL

SKU	W (in)	H (in)	D (in)
BBC42L, BBC42R	36	34 1/2	24
BBC45L, BBC45R	39	34 1/2	24

- BBC42 can be pulled up to 42" minimum or 45" maximum from wall
- BBC42 door is 16 1/8" wide and the door opening is 13 1/2" wide
- BBC45 can be pulled up to 45" minimum or 48" maximum from wall
- BBC45 door is 17 5/8" wide and the door opening is 15" wide
- Universal left and right cabinet
- Perpendicular cabinet requires 3" filler for adequate clearance and is not included

Corner Base Diagonal Cabinet with Shelf



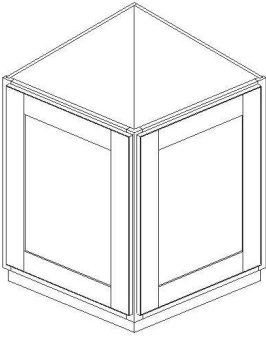
Modifications:

- FE
- PFI
- NTK
- RDTK
- SDL

SKU	W (in)	H (in)	D (in)
CBD42	42	34 1/2	24

- 1 shelf included

Angle Base Cabinet



Modifications:

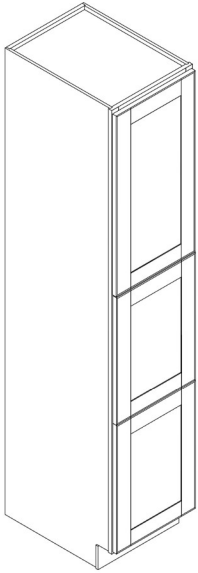
- PFI
- NTK
- RDTK
- SDL

SKU	W (in)	H (in)	D (in)
AB124	24	34 1/2	24

- 1 shelf included

Tall Cabinets

Pantry Cabinets



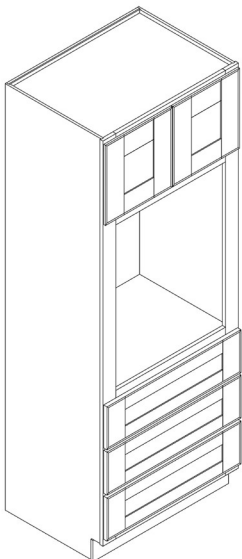
Modifications:

- FE
- ID
- RD
- PFI
- SDL

SKU	W (in)	H (in)	D (in)
LC1884	18	84	24
LC1890	18	90	24
LC1896	18	96	24
LC2484	24	84	24
LC2490	24	90	24
LC2496	24	96	24
LC3084	30	84	24
LC3090	30	90	24
LC3096	30	96	24

- Lower cabinet opening is 49 1/3"
- Lower section is 2 doors doweled together.
- Top door height of 84" matches 30" wall cabinet
- Top door height of 90" matches 36" wall cabinet
- Top door height of 96" matches 42" wall cabinet.
- Lower door panels are 24 11/16" high
- Butt doors on 24" and 30" wide Pantry cabinets

Built-in Oven Single/Double



Modifications:

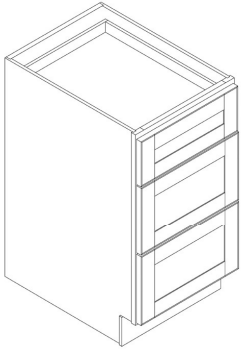
- FE
- RD
- PFI
- SDL

SKU	W (in)	H (in)	D (in)
OC3384SD	33	84	24
OC3390SD	33	90	24
OC3396SD	33	96	24

- Frame opening height: 27"
- Maximum cutout width: 31 1/2"
- Maximum cut-out dimension will allow 1/4" reveal
- Drawer height 7"
- For double oven, remove bottom two drawers and install support.
- Upper door heights:
 - 84" h = 16 15/16" h
 - 90" h = 22 15/16" h
 - 96" h = 28 15/16" h

Vanity Cabinets

Vanity Drawer Cabinet

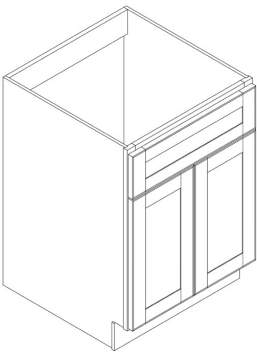


Modifications:

- FE
- RD
- RMD
- NTK
- RDTK
- FTD
- SDL

SKU	W (in)	H (in)	D (in)
VDC12	12	34 1/2	21
VDC15	15	34 1/2	21
VDC18	18	34 1/2	21
VDC24	24	34 1/2	21

Vanity Sink Base Cabinet



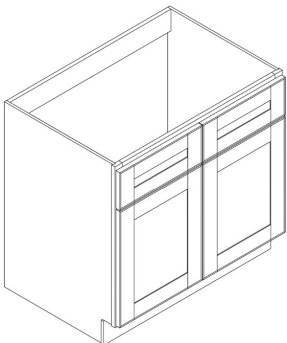
Modifications:

- FE
- RD
- PFI
- NTK
- RDTK
- SDL

SKU	W (in)	H (in)	D (in)
VSB24	24	34 1/2	21
VSB30	30	34 1/2	21

- All two door base cabinets are BUTT cabinets, (no center stile).
- Does not have a full back

Vanity Sink Base Cabinet



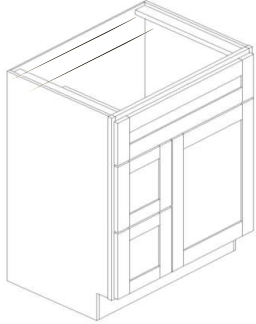
Modifications:

- FE
- RD
- PFI
- NTK
- RDTK
- SDL

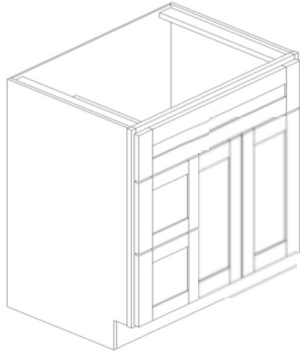
SKU	W (in)	H (in)	D (in)
VSB36	36	34 1/2	24

- All two door base cabinets are BUTT cabinets, (no center stile).
- Does not have a full back

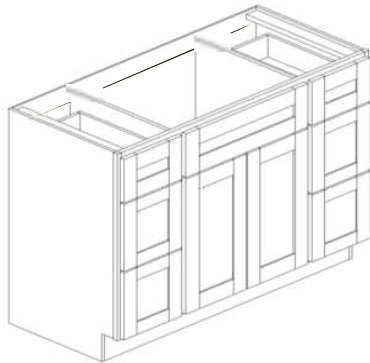
Vanity Units



VDC30
Left Drawer Stack (LS) shown



VDC36 and VDC42
Left Drawer Stack (LS) shown



VDC48
Center Sink (CS) shown

Modifications:

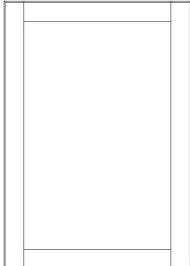
- FE
- RD
- PFI
- NTK
- RDTK
- SDL

SKU	W (in)	H (in)	D (in)
VDC30	30	34 1/2	21
VDC36	36	34 1/2	21
VDC42	42	34 1/2	21
VDC48	48	34 1/2	21

- Does not have a full back

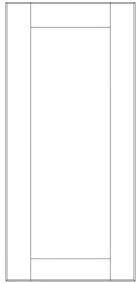
Panels & Skins

Base End Panel



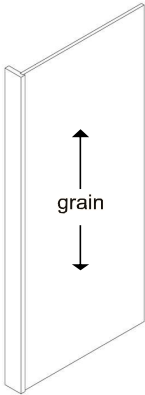
SKU	W (in)	H (in)	D (in)
BEP30	23 3/4	29 1/4	3/4
BEP36	23 3/4	35	3/4

Wall End Panel



SKU	W (in)	H (in)	D (in)
WEP30	11 3/4	29	3/4
WEP36	11 3/4	35	3/4
WEP42	11 3/4	41	3/4

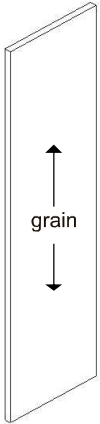
Dishwasher Panel



SKU	W (in)	H (in)	D (in)
DWP1.5	1 1/2	34 1/2	24
DWP3	3	34 1/2	24

- Matching finish both sides, no edgebanding

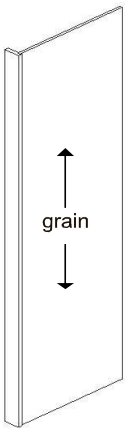
Fridge Panel



SKU	W (in)	H (in)	D (in)
REF9624	3/4	96	24

- Matching finish both sides and edgebanded all four sides

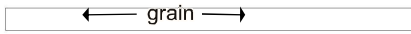
Fridge Panel with Return (1 1/2" or 3" Filler)



SKU	W (in)	H (in)	D (in)
FP9630-1.5	30	96	1 1/2
FP9624-1.5	24	96	1 1/2
FP9624-3	24	96	3

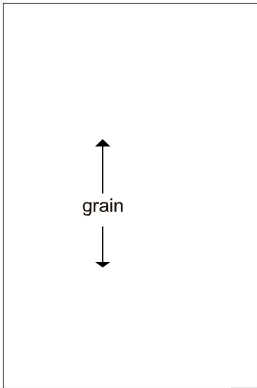
- Matching finish both sides, no edgebanding

Toe Kick



SKU	W (in)	H (in)	D (in)
TK8	4 1/2	96	3/16

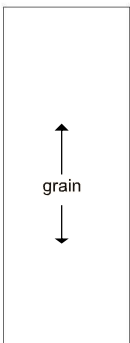
Base Cabinet Skin



SKU	W (in)	H (in)	D (in)
BSKIN	23 1/4	34 1/2	3/16

- Notch for toe kick in field

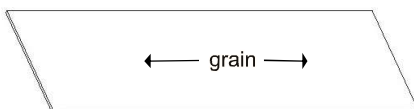
Wall Cabinet Skin



SKU	W (in)	H (in)	D (in)
WSKIN	11 1/4	42	3/16

SKU	W (in)	H (in)	D (in)
LCSKIN96	23 1/4	96	3/16

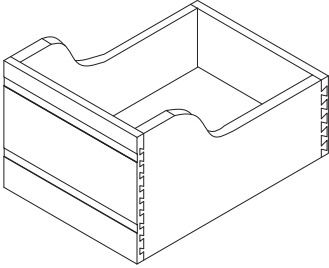
Island Panel



SKU	W (in)	H (in)	D (in)
IP96	36	96	3/16

Accessories

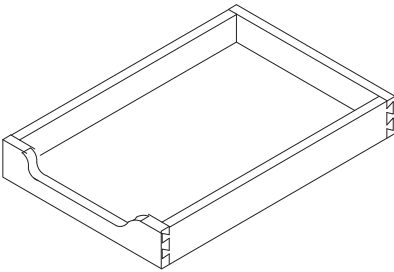
Pullout waste Bin Double Can



SKU	W (in)	H (in)	D (in)
PWB18	14 1/8	11	21

- Natural birch
- Includes 2 white 35 QT waste baskets, door mount hardware, and undermount glides

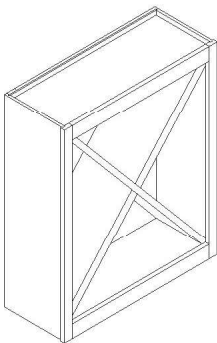
Rollout Tray



SKU	W (in)	H (in)	D (in)
RT15	11 1/8	3	21
RT18	14 1/8	3	21
RT21	17 1/8	3	21
RT24	20 1/8	3	21
RT27	23 1/8	3	21
RT30	26 1/8	3	21
RT36	32 1/8	3	21

- Natural birch
- Undermount soft close glides

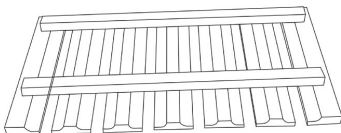
Wine Storage Cabinet



SKU	W (in)	H (in)	D (in)
WSC2424	24	12	12

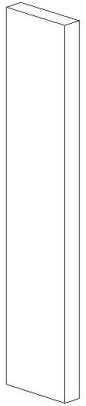
- Natural Birch interior with natural birch edgeworked wine storage 'X' dividers.

Wine Glass rack



SKU	W (in)	H (in)	D (in)
WR30GH	30	11 1/2	12

Wall Filler



SKU	W (in)	H (in)	D (in)
-----	-----------	-----------	-----------

WF342	3	42	3/4
-------	---	----	-----

WF396	3	96	3/4
-------	---	----	-----

WF696	6	96	3/4
-------	---	----	-----

WF642	6	42	3/4
-------	---	----	-----

- Finished on 3 sides, back natural

Straight Valance

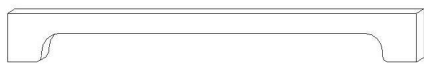


SKU	W (in)	H (in)	D (in)
-----	-----------	-----------	-----------

STV36	35	4	3/4
-------	----	---	-----

STV48	48	4	3/4
-------	----	---	-----

Traditional Arch Valance

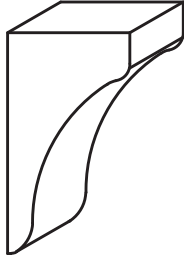


SKU	W (in)	H (in)	D (in)
-----	-----------	-----------	-----------

TAV36	36	4	3/4
-------	----	---	-----

TAV48	48	4	3/4
-------	----	---	-----

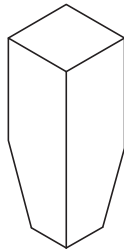
Small Bar Bracket Corbel



SKU	W (in)	H (in)	D (in)
SBC9	4	9	2 1/2

- Unfinish natural birch

Cabinet Feet



SKU	W (in)	H (in)	D (in)
CF5	2 1/4	5	2 1/4

- Painted finishes: all sides finished

Shaker-Tapered Wood Leg Post

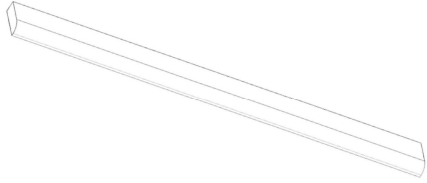


SKU	W (in)	H (in)	D (in)
STL36	3 1/2	36	3 1/2

- Matching finish

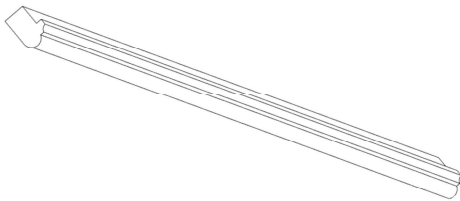
Moldings

Scribe Molding



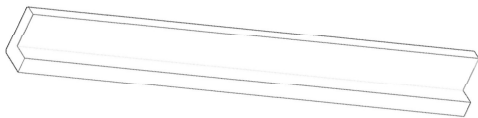
SKU	W (in)	H (in)	D (in)
SM8	96	3/4	3/4

Classic Light Rail



SKU	W (in)	H (in)	D (in)
LRC8	96	1 1/2	1 3/4

Flat Light Rail



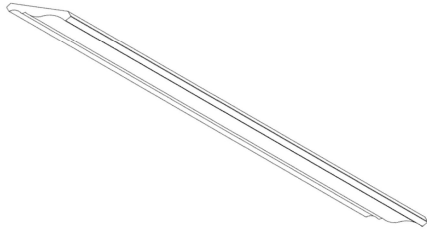
SKU	W (in)	H (in)	D (in)
LRF8	96	2	1 3/4

Quarter Round



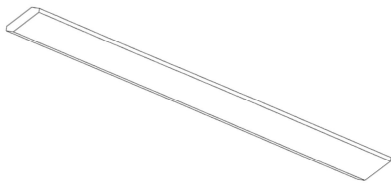
SKU	W (in)	H (in)	D (in)
QR8	96	3/4	3/4

Classic Crown Molding



SKU	W (in)	H (in)	D (in)
CMC8	96	2 3/4	1 1/4

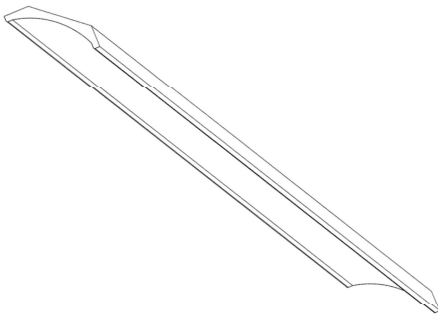
Flat Crown Molding



SKU	W (in)	H (in)	D (in)
CMF8	96	3	3/4

- All sides finished

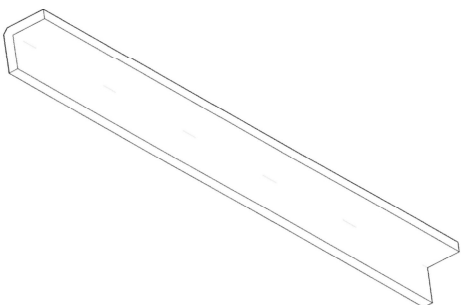
Large Cove Molding



SKU	W (in)	H (in)	D (in)
LCM8	96	3 7/8	2 3/4

- All sides finished

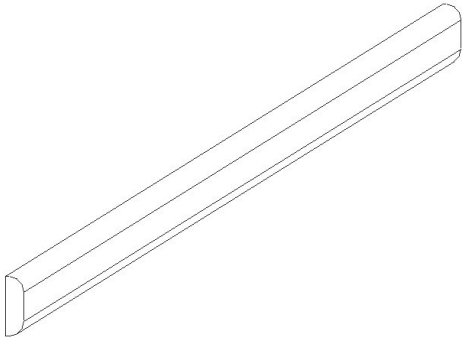
Corner Molding



SKU	W (in)	H (in)	D (in)
OM8	96	3/4	3/4

- Painted exterior. Interior natural

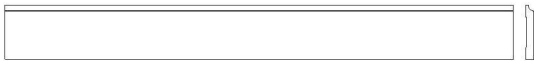
Batten Molding



SKU	W (in)	H (in)	D (in)
BTM8	96	3/4	1/4

- All sides finished

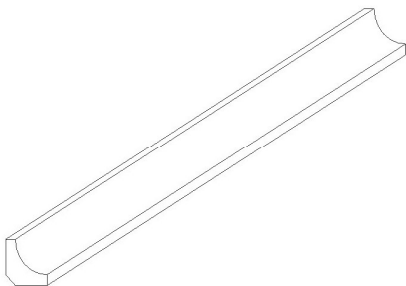
Base Molding



SKU	W (in)	H (in)	D (in)
BM8	96	4 1/2	3/8

- All sides finished.

Corner Cove Molding



SKU	W (in)	H (in)	D (in)
CCM8	96	4 1/2	3/8

- Painted exterior. Interior natural

Touch-Up & Sample Doors

Touch-up Kit

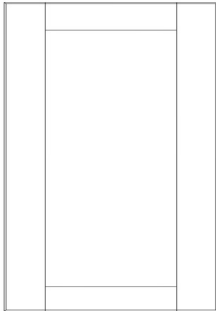
SKU	W (in)	H (in)	D (in)
TU			

Aerosol Spray Can

SKU	W (in)	H (in)	D (in)
A			

Sample Doors

SKU	W (in)	H (in)	D (in)
DS1215			





List Price

SKU	DESCRIPTION	GROUP A SNOW & PEBBLE	GROUP B GRAYSTON E & COBALT	GROUP C MOUNTAIN
BASE CABINETS				
BC12	Base Cabinet 12"W 1 Door, 1 Shelf, 1 Drawer	431	457	485
BC15	Base Cabinet 15"W 1 Door, 1 Shelf, 1 Drawer	477	506	537
BC18	Base Cabinet 18"W 1 Door, 1 Shelf, 1 Drawer	504	534	567
BC21	Base Cabinet 21"W 1 Doors, 1 Shelf, 1 Drawer	544	577	612
BC24	Base Cabinet 24"W 2 Doors, 1 Shelf, 1 Drawer	608	644	683
BC27	Base Cabinet 27"W 2 Doors, 1 Shelf, 1 Drawer	652	691	733
BC30	Base Cabinet 30"W 2 Doors, 1 Shelf, 1 Drawer	732	775	822
BC33	Base Cabinet 33"W 2 Doors, 1 Shelf, 1 Drawer	781	827	877
BC36	Base Cabinet 36"W 2 Doors, 1 Shelf, 2 Drawers	859	910	965
BASE FULL HEIGHT CABINETS				
BC09FH	Base Cabinet 9"W 1 Door, 1 Shelf, (No Drawer)	301	319	339
BC12FH	Base Cabinet 12"W 1 Door, 1 Shelf, (No Drawer)	382	405	430
BC18FH	Base Cabinet 18"W 1 Door, 1 Shelf, (No Drawer)	453	480	509
SINK BASE CABINETS				
SB30	Sink Base Cabinet 30"W 2 Doors, 1 Drawer Fronts, (No Shelf)	501	531	563
SB33	Sink Base Cabinet 33"W 2 Doors, 1 Drawer Fronts, (No Shelf)	532	563	597
SB36	Sink Base Cabinet 36"W 2 Doors, 2 Drawer Fronts, (No Shelf)	582	617	655
SBA36	Farm House Sink Base Apron Cabinet 36"W, (No Shelf)	653	693	735
SBCD42	Corner Sink Base 42" 2 Doors, 1 Drawer Front, (No Shelf)	862	914	969
SPICE BASE CABINETS				
SR09	Base Cabinet with Spice Rack 9"W 1 Door	512	542	575
SR12	Base Cabinet with Spice Rack 12"W 1 Door	577	612	649
MICROWAVE BASE CABINETS				
MBC30	Microwave Base Cabinet 30"W - 1 Shelf, 1 Drawer	826	875	928
ANGLE & CORNER BASE CABINETS				
AB124	Angle Base Cabinet 24"W 2 Doors, 1 Shelf	553	587	623
BBC42	Blind Base Corner 36"W 1 Door, 1 Shelf, 1 Drawer	655	694	736
BBC45	Blind Base Corner 39"W 1 Door, 1 Shelf, 1 Drawer	841	891	945
CB33	Base Corner Cabinet 33"W with Lazy Susan	764	810	859
CB36	Base Corner Cabinet 36"W with Lazy Susan	835	885	939
CBD42	Base Diagonal Corner 42"W 2 Doors, 1 Shelf, 1 Drawer	866	918	974
DRAWER BASE CABINETS 2 DRAWERS				
DC224	Base Cabinet 24"W 2 Drawers	817	866	918
DC230	Base Cabinet 30"W 2 Drawers	908	962	1020
DC236	Base Cabinet 36"W 2 Drawers	1013	1074	1139
DRAWER BASE CABINETS 3 DRAWERS				
DC312	Base Cabinet 12"W 3 Drawers	642	681	722
DC315	Base Cabinet 15"W 3 Drawers	701	743	788
DC318	Base Cabinet 18"W 3 Drawers	759	804	853
DC321	Base Cabinet 21"W 3 Drawers	819	868	921
DC324	Base Cabinet 24"W 3 Drawers	853	905	960
DC327	Base Cabinet 27"W 3 Drawers	1108	1175	1246
DC330	Base Cabinet 30"W 3 Drawers	957	1014	1075
DC336	Base Cabinet 36"W 3 Drawers	1055	1119	1187
WALL CABINETS				
WC0930	Wall Cabinet 9"W X 30"H 1 Door, 2 Shelves	235	249	264
WC0936	Wall Cabinet 9"W X 36"H 1 Door, 2 Shelves	261	276	293
WC0942	Wall Cabinet 9"W X 42"H 1 Door, 3 Shelves	299	317	337

SKU	DESCRIPTION	GROUP A SNOW & PEBBLE	GROUP B GRAYSTON E & COBALT	GROUP C MOUNTAIN
WALL CABINETS				
WC1230	Wall Cabinet 12"W X 30"H 1 Door, 2 Shelves	264	280	297
WC1236	Wall Cabinet 12"W X 36"H 1 Door, 2 Shelves	302	320	340
WC1242	Wall Cabinet 12"W X 42"H 1 Door, 3 Shelves	346	367	390
WC1530	Wall Cabinet 15"W X 30"H 1 Door, 2 Shelves	302	320	340
WC1536	Wall Cabinet 15"W X 36"H 1 Door, 2 Shelves	337	357	379
WC1542	Wall Cabinet 15"W X 42"H 1 Door, 3 Shelves	393	417	443
WC1830	Wall Cabinet 18"W X 30"H 1 Door, 2 Shelves	341	361	383
WC1836	Wall Cabinet 18"W X 36"H 1 Door, 2 Shelves	375	398	422
WC1842	Wall Cabinet 18"W X 42"H 1 Door, 3 Shelves	435	461	489
WC2130	Wall Cabinet 21"W X 30"H 1 Door, 2 Shelves	381	403	428
WC2136	Wall Cabinet 21"W X 36"H 1 Door, 2 Shelves	422	448	475
WC2142	Wall Cabinet 21"W X 42"H 1 Door, 3 Shelves	484	513	544
WC2430	Wall Cabinet 24"W X 30"H 2 Doors, 2 Shelves	435	461	489
WC2436	Wall Cabinet 24"W X 36"H 2 Doors, 2 Shelves	484	513	544
WC2442	Wall Cabinet 24"W X 42"H 2 Doors, 3 Shelves	561	594	630
WC2730	Wall Cabinet 27"W X 30"H 2 Doors, 2 Shelves	462	490	520
WC2736	Wall Cabinet 27"W X 36"H 2 Doors, 2 Shelves	517	548	581
WC2742	Wall Cabinet 27"W X 42"H 2 Doors, 3 Shelves	599	635	674
WC3030	Wall Cabinet 30"W X 30"H 2 Doors, 2 Shelves	501	531	563
WC3036	Wall Cabinet 30"W X 36"H 2 Doors, 2 Shelves	555	588	624
WC3042	Wall Cabinet 30"W X 42"H 2 Doors, 3 Shelves	642	681	722
WC3330	Wall Cabinet 33"W X 30"H 2 Doors, 2 Shelves	539	571	606
WC3336	Wall Cabinet 33"W X 36"H 2 Doors, 2 Shelves	602	639	678
WC3342	Wall Cabinet 33"W X 42"H 2 Doors, 3 Shelves	686	727	771
WC3630	Wall Cabinet 36"W X 30"H 2 Doors, 2 Shelves	599	635	674
WC3636	Wall Cabinet 36"W X 36"H 2 Doors, 2 Shelves	666	706	749
WC3642	Wall Cabinet 36"W X 42"H 2 Doors, 3 Shelves	768	814	863
BRIDGE WALL CABINETS				
WC3012	Wall Cabinet 30"W X 12"H 2 Doors, (No Shelf)	277	293	311
WC3015	Wall Cabinet 30"W X 15"H 2 Doors, (No Shelf)	306	324	344
WC3018	Wall Cabinet 30"W X 18"H 2 Doors, (No Shelf)	337	357	379
WC3021	Wall Cabinet 30"W X 21"H 2 Doors, (No Shelf)	361	382	405
WC3024	Wall Cabinet 30"W X 24"H 2 Doors, 1 Shelf	417	442	469
WC3312	Wall Cabinet 33"W X 12"H	376	398	422
WC3318	Wall Cabinet 33"W X 18"H	445	472	501
WC3324	Wall Cabinet 33"W X 24"H	556	590	626
WC3612	Wall Cabinet 36"W X 12"H 2 Doors, (No Shelf)	333	353	375
WC3615	Wall Cabinet 36"W X 15"H 2 Doors, (No Shelf)	362	384	408
WC3618	Wall Cabinet 36"W X 18"H 2 Doors, (No Shelf)	395	419	445
WC3624	Wall Cabinet 36"W X 24"H 2 Doors, 1 Shelf	493	523	555
BRIDGE REFRIDGERATOR WALL CABINETS				
WC331224	Wall Cabinet 33"W X 12"H X 24"D	408	433	459
WC331824	Wall Cabinet 33"W X 18"H X 24"D	510	541	574
WC332424	Wall Cabinet 33"W X 24"H X 24"D	615	652	692
WC361224	Wall Cabinet 36"W X 12"H X 24"D	409	434	461
WC361824	Wall Cabinet 36"W X 18"H X 24"D 2 Doors, (No Shelf)	452	479	508
WC362424	Wall Cabinet 36"W X 24"H X 24"D 2 Doors, 1 Shelf	544	577	612
MICROWAVE WALL CABINET				
WM3018	Microwave Wall Cabinet 30"W X 18"H	228	241	256
DIAGONAL & ANGLE CORNER WALL CABINETS				
WD2430	Wall Diagonal Corner Cabinet 24"W X 30"H 1 Door, 2 Shelves	506	536	569
WD2436	Wall Diagonal Corner Cabinet 24"W X 36"H 1 Door, 2 Shelves	559	592	628
WD2442	Wall Diagonal Corner Cabinet 24"W X 42"H 1 Door, 3 Shelves	646	685	727
WD274215	Wall Diagonal Corner Cabinet 27"W X 42"H 1 Door, 3 Shelves	746	791	839
BLIND CORNER WALL CABINETS				
WBC2730	Wall Blind Corner 27"W X 30"H	746	791	839
WBC2736	Wall Blind Corner 27"W X 36"H	805	854	906
WBC2742	Wall Blind Corner 27"W X 42"H	918	973	1032

SKU	DESCRIPTION	GROUP A SNOW & PEBBLE	GROUP B GRAYSTON E & COBALT	GROUP C MOUNTAIN
EASY REACH CORNER WALL CABINETS				
WER2430	Wall Easy Reach Corner Cabinet 24"W X 30"H	976	1034	1097
WER2436	Wall Easy Reach Corner Cabinet 24"W X 36"H	1055	1119	1187
WER2442	Wall Easy Reach Corner Cabinet 24"W X 42"H	1205	1277	1354
ANGLE WALL CABINETS				
AW1230	Angle Wall Cabinet 30"H 1 Door, 2 Shelves	271	288	306
AW1236	Angle Wall Cabinet 36"H 1 Door, 2 Shelves	295	313	332
AW1242	Angle Wall Cabinet 42"H 1 Door, 3 Shelves	337	357	379
WOOD RANGE HOODS * Available in painted finishes only				
WRH3048-ART	Wood Range Hood - Artisan	2300	2300 *	NA
WRH3648-ART	Wood Range Hood - Artisan	2500	2500 *	NA
WRH4248-ART	Wood Range Hood - Artisan	2700	2700 *	NA
WRH3647-SIG	Wood Range Hood - Signature	2500	2500 *	NA
WRH4247-SIG	Wood Range Hood - Signature	2600	2600 *	NA
WRH3024-FNT	Wood Range Hood - Front	900	900 *	NA
WRH3624-FNT	Wood Range Hood - Front	1000	1000 *	NA
PANTRY CABINETS				
LC1884	Pantry Cabinet 18"W X 84"H 2 Doors, 3 Shelves	1066	1130	1198
LC1890	Pantry Cabinet 18"W X 90"H 2 Doors, 3 Shelves	1113	1180	1251
LC1896	Pantry Cabinet 18"W X 96"H 2 Doors, 4 Shelves	1166	1236	1311
LC2484	Pantry Cabinet 24"W X 84"H 4 Doors, 3 Shelves	1306	1385	1469
LC2490	Pantry Cabinet 24"W X 90"H 4 Doors, 3 Shelves	1364	1446	1533
LC2496	Pantry Cabinet 24"W X 96"H 4 Doors, 4 Shelves	1441	1527	1619
LC3084	Pantry Cabinet 30"W X 84"H - 4 Doors, 3 Shelves	1748	1852	1964
LC3090	Pantry Cabinet 30"W X 90"H - 4 Doors, 3 Shelves	1831	1940	2057
LC3096	Pantry Cabinet 30"W X 96"H - 4 Doors, 4 Shelves	1942	2058	2182
OVEN CABINETS				
OC3384SD	Built-in Oven Single/DBL 33"W X 84"H 2 Upper Doors, 3 Drawers	1921	2036	2159
OC3390SD	Built-in Oven Single/DBL 33"W X 90"H 2 Upper Doors, 3 Drawers	1999	2119	2247
OC3396SD	Built-in Oven Single/DBL 33"W X 96"H 2 Upper Doors, 3 Drawers	2081	2206	2339
VANITY/BATH CABINETS				
VDC12	Vanity Cabinet 12"W X 34 1/2"H X 21"D 3 Drawers	617	654	694
VDC15	Vanity Cabinet 15"W X 34 1/2"H X 21"D 3 Drawers	677	718	762
VDC18	Vanity Cabinet 18"W X 34 1/2"H X 21"D 3 Drawers	728	772	819
VDC24	Vanity Cabinet 24"W X 34 1/2"H X 21"D 3 Drawers	964	1021	1083
VS24	Vanity Cabinet 24"W x 34 1/2"H x 21"D 2 Doors, 1 False Drawer Front439		465	493
VS30	Vanity Cabinet 30"W x 34 1/2"H x 21"D 2 Doors, 1 False Drawer Front495		525	557
VS36	Vanity Cabinet 30"W x 34 1/2"H x 21"D 2 Doors, 2 False Drawer Fronts	582	617	655
VANITY/BATH COMBO CABINETS				
VDC30LS	Vanity Drawer Cabinet 30"W x 34 1/2"H x 21"D - 2 Drawers, Left Drawer Sta	855	906	961
VDC30RS	Vanity Drawer Cabinet 30"W x 34 1/2"H x 21"D - 2 Drawers, Right Drawer Si	855	906	961
VDC36LS	Vanity Drawer Cabinet 36"W x 34 1/2"H x 21"D - 2 Drawers, Left Drawer Sta	978	1037	1100
VDC36RS	Vanity Drawer Cabinet 36"W x 34 1/2"H x 21"D - 2 Drawers, Right Drawer Si	978	1037	1100
VDC42LS	Vanity Drawer Cabinet 42"W x 34 1/2"H x 21"D - 3 Drawers, Left Drawer Sta	1025	1086	1152
VDC42RS	Vanity Drawer Cabinet 42"W x 34 1/2"H x 21"D - 3 Drawers, Right Drawer Si	1025	1086	1152
VDC48CS	Vanity Drawer Cabinet 48"W x 34 1/2"H x 21"D - 6 Drawers, Center Sink	1491	1580	1675
SKIN PANELS				
BSKIN	Base Skin Panel 23 1/4"W x 34 1/2" D	81	86	92
WSKIN	Wall Skin Panel 11 1/4"W x 42" D	55	58	62
LCSKIN96	Pantry Skin Panel 96" x 23 1/4" D	339	360	382
ISLAND PANEL				
IP96	Island Panel 36"W x 96"H x 1/8"D	294	312	331
DECORATIVE END PANELS				
BEP30	Base End Panel 30"W,	361	383	406
BEP36	Base End Panel 36"W,	374	397	421
WEP30	Wall End Panel 30"H,	209	222	236
WEP36	Wall End Panel 36"H	246	261	277
WEP42	Wall End Panel 42"H	290	307	326

SKU	DESCRIPTION	GROUP A SNOW & PEBBLE	GROUP B GRAYSTON E & COBALT	GROUP C MOUNTAIN
REFRIGERATOR PANELS				
REF9624	Fridge Panel (No Return) 96"W X 24" X 3/4"D	444	471	500
FP9624-1.5	Fridge Panel with Return 96" X 24" X 1 1/2"D	459	486	516
FP9624-3	Fridge Panel with Return 96" x 24" x 3"D	505	535	568
FP9630-1.5	Fridge Panel with Return 96" X 30" X 1 1/2"D	527	558	592
DISHWASHER PANELS				
DWP1.5	Dishwasher Panel 24"W x 34 1/2"H x 1 1/2"D	159	169	180
DWP3	Dishwasher Panel 24"W x 34.5"H x 3"D	198	210	223
MOLDINGS				
CMC8	Classic Crown Molding 3"W X 96"H X 3/4"D	259	275	292
CMF8	Flat Crown Molding 3"W X 96"H X 3/4"D	259	275	292
OM8	Corner Molding 3/4"W X 96"H X 3/4"D	87	93	99
QR8	Quarter Round 3/4"W X 96"H X 3/4"D	51	54	58
SM8	Scribe Molding 3/4"W X 96"H X 1/4"D	46	49	52
TK8	Toe Kick 4 1/2"W X 96"H X 1/4"D	53	56	60
LRC8	Classic Light Rail 1 1/2"W X 96"H X 1 1/8"D	183	194	206
LRF8	Flat Light Rail 2"W x 96"H x 1 1/8"D	157	166	176
LCM8	Large Cove Molding 4"W x 96"H x 3/4"D	335	355	377
BM8	Base Molding 4 1/2"W x 96"H x 3/4"D	281	298	316
BTM8	Batten Molding 3/4"W x 96"H x 1/4"D	70	74	79
CCM8	Corner Cove Molding 1/2"W x 96"H x 1/2"D	59	63	67
FILLERS				
WF342	Wall Filler 3"W X 42"H	72	77	82
WF396	Wall Filler 3"W X 96"H	235	249	264
WF642	Wall Filler 6"W X 42"H	133	141	150
WF696	Wall Filler 6"W X 96"H	416	441	468
WINE STORAGE				
WSC1818	Wine Storage Cabinet 18"W X 18"H	210	223	237
WSC2424	Wine Storage Cabinet 24"W X 24"H	275	292	310
WR30GH	Wine Glass Rack 30"W	142	150	159
CORBEL				
SBC9	Small Bar Corbel 4"W x 9"H x 2 1/2"D	85	90	96
CABINET FEET				
CF5	Cabinet Feet 2 1/4"W x 5"H x 2 1/4"D	31	33	35
WOOD LEG POST				
STL36	Shaker Tapered Wood Leg Post 3 1/2"W X 36"H X 3 1/2"D	189	201	214
VALANCES				
TAV36	Traditional Arch Valance 36"W X 4"H X 3/4"D	111	118	126
TAV48	Traditional Arch Valance 48"W X 4"H X 3/4"D	135	143	152
STRAIGHT VALANCES				
STV36	Straight Valance 36"W x 4"H x 3/4"D	105	111	118
STV48	Straight Valance 48"W x 4"H x 3/4"D	128	135	144
PULLOUT WASTE BIN				
PWB18	Pullout Waste Bin Double Can 14 1/8"W	483	483	483
ROLLOUT TRAYS				
RT15	Rollout Tray 11 1/8"W x 3"D	183	183	183
RT18	Rollout Tray 14 1/8"W x 3"D	189	189	189
RT21	Rollout Tray 17 1/8"W x 3"D	198	198	198
RT24	Rollout Tray 20 1/8"W x 3"D	206	206	206
RT27	Rollout Tray 23 1/8"W x 3"D	212	212	212
RT30	Rollout Tray 26 1/8"W x 3"D	220	220	220
RT36	Rollout Tray 32 1/8"W x 3"D	230	230	230
TOUCH-UP KIT				
TU	Touch-Up and Repair Kit	46	46	46
AEROSOL CANS				
A	Aerosol Spray Can	70	70	70
SAMPLE DOORS				
DS1215	Sample Door 12" x 15"	70	70	70